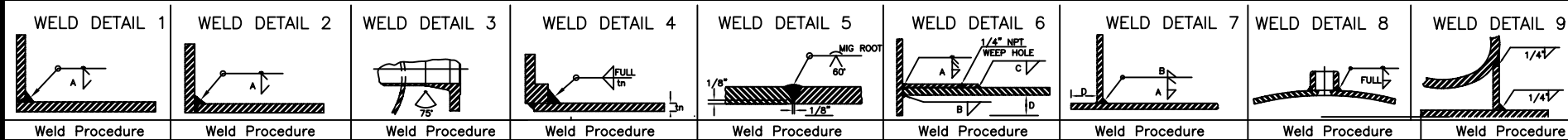
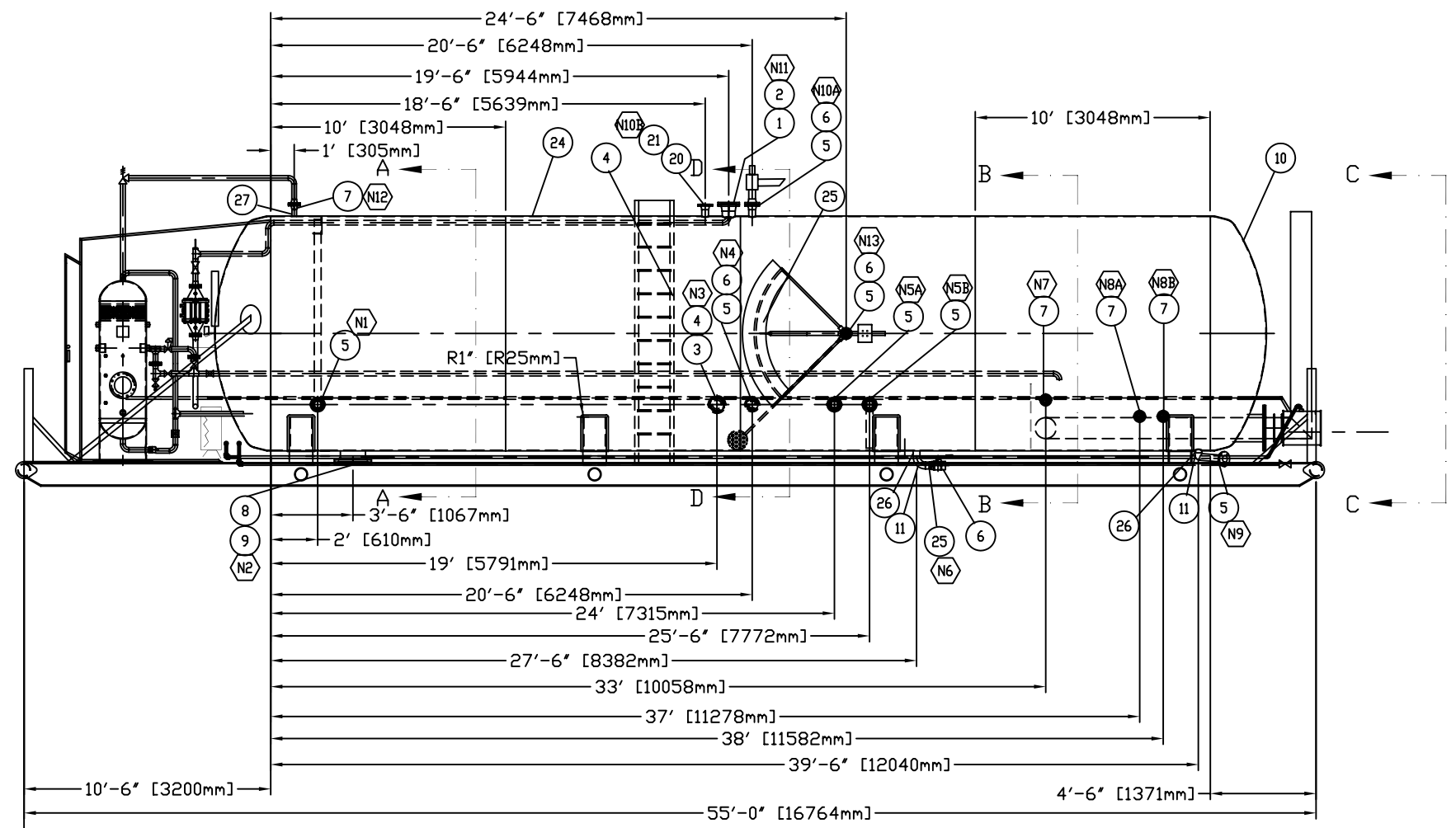


NOZZLE SCHEDULE AND WELD DETAILS



Mark No.	No. Rec'd	Size	ANSI Rating And Facing	Service	O.D. of Nozzle Neck	Projection Inside/Outside	Welding Detail Number	Fillet Weld Size A/B/C/D	Bill of Mat'l Item No.	Remarks	Elevation	Angle
N1	1	3" [88.9mm]	SA 105 150#	TRUCK OUT CONN.	3 1/2" [88.9]	6"		3/8"		WELD NECK		
N2	1	12" [324mm]	SA 105 150#	CLEAN OUT CONN.	12 3/4" [324]	6"		3/8"		WELD NECK		
N3	1	4" [114.3mm]	SA 105 150#	ANODE CONN.	4 1/2" [114]	6"		3/8"		WELD NECK		
N4	1	3" [88.9mm]	SA 105 150#	SPARE CONN.	3 1/2" [88.9]	6"		3/8"		WELD NECK		
N5A/B	2	3" [88.9mm]	SA 105 150#	PUMP OUT HIGH/LOW CONN.	3 1/2" [88.9]	6"		3/8"		WELD NECK		
N6	1	2" [60.3mm]	SA 105 150#	DRAIN CONN.	2 3/8" [60.3]	6"		3/8"		WELD NECK		
N7	1	2" [60.3mm]	SA 105 150#	SPARE CONN.	2 3/8" [60.3]	6"		3/8"		WELD NECK		
N8A/B	1	2" [60.3mm]	SA 105 150#	T.C/THERMOWELL CONN.	2 3/8" [60.3]	6"		3/8"		WELD NECK		
N9	1	3" [88.9mm]	SA 105 150#	DRAIN CONN.	3 1/2" [88.9]	6"		3/8"		WELD NECK		
N10A/B	2	2" [60.3mm]	SA 105 150#	VENT/SPARE CONN.	2 3/8" [60.3]	6"		3/8"		WELD NECK		
N11	1	6" [168mm]	SA 105 150#	SPARE CONN.	6 5/8" [168]	6"		3/8"		WELD NECK		
N12	1	2" [60.3mm]	SA 105 150#	PRESSURE VENT CONN.	2 3/8" [60.3]	6"		3/8"		WELD NECK		
N13	1	2" [60.3mm]	SA 105 150#	LEVEL GAUGE CONN.	2 3/8" [60.3]	6"		3/8"		WELD NECK		

NOTE: N3 & N4 ON SAME SIDE AS LADDER. OPPOSITE SIDE OF VIEWED VESSEL. ORIENTATION OF N6 NOTE AS SHOWN.



Bill of Materials

No	Qty	Size	Bore	Rating	FCB	Type	Specification/Material	Remarks	Heat#
1	1	6" [168]	STD	150#	RF	WN	SA 105N	N11	
2	1	6" [168]		150#	RF	BLIND	SA 105N	N11	
3	1	4" [114.3]	STD	150#	RF	WN	SA 105N	N4	
4	1	4" [114.3]		150#	RF	BLIND	SA 105N	N4	
5	7	3" [88.9]	STD	150#	RF	WN	SA 105N	N1, N4, N5A/B, N9, N10A/B	
6	2	3" [88.9]	STD	150#	RF	BLIND	SA 105N	N4, N10B	
7	5	2" [60.3]	STD	150#	RF	WN	SA 105N	N7, N8A/B, N12, N13	
8	1	12" [324]	STD	150#	RF	WN	SA 105N	N2	
9	1	12" [324]	STD	150#	RF	BLIND	SA 105N	N2	
No	Qty	Size	Bore	Description	Yield	Specification/Material	Remarks		
10	2	10'-0"	1/4" THK	2:1 S.E. HEADS		SA 516 GR70	HEADS		
11	2	3" [88.9]	STD	90° WELD ELL		SA 234 WPB	DRAIN ELL		
12									
13									
14									
No	Qty	Size	Description	Rating	Ends	Specification/Material	Remarks		
15									
16									
17									
No	Qty	Size	Thickness	Rating	Description	Specification/Material	Remarks		
18									
19									
20									
No	Qty	NO./SM	Sets	Diameter	Length	Bolt Spec	Nut Spec.	Match Item	Remarks
21									
22									
23									
No	Qty	Size	Type	Sch.	Yield	Specification/Material	Remarks		
24	4	10'-0" [3048]	ROLLED	1/4" THK		SA 516 GR70 X 10'-0" LG	SHELL		
25	1	3" [88.9]	SMLS	STD		SA 106B TOE	DRAIN CONN N6		
26	2	3" [88.9]	SMLS	STD		SA 106B	DRAIN EXT		
27	3	2" [60.3]	SMLS	STD		SA 106B X ~4" LG	NOZZLE PUPS		
28									
29									
30									
31									
32									
33									
34									
No	Qty	Size	Description	Remarks					
35									
36									
37									
38									
39									
40									
41									
42									
43									
44									
45									
46									
47									
48									
49									
No	Qty	Description	Remarks						
50									
51									
52									
53									
54									
55									
56									
57									
58									
59									
60									

Rev.	Description	By	Y	M	D	App	Y	M	D
0	ISSUED FOR APPROVAL	EW	04	01	28				

FABRICATION CON'T	
DES.&FAB. TO:	
MDMT:	
IMPACT TESTS:	
DESIGN TEMP.:	
GENERAL NOTES	

FABRICATION	
TFS WFS:	
DESIGN PRESS.	14.9 PSI
STRESS RELIEVE:	NO
HYDRO TEST:	NO
INSULATION/TRACING:	NO
ALUM. CLADDING:	NO
MAG PARTICLE:	NO
RADIOGRAPHY:	NO
CORROSION ALLOWANCE:	N/A
CRN No.	N/A
WFS No.	N/A
Q.C. PROGRAM#	AQP-1266
P.W.H.T.	NO

Ignition System	
N/A	
Wt. Est.	Salesperson
	TTI
Paint	SANDBLAST SSPC-SP6 RUSTOLEUM BLACK
Special Spec.	

DWG BY:	DWG #:
EMW	MAG-8004
Date	04 01 28
Y	M D
DESIGN BY	BR
JOB#	QUOTE#
4-8004	
Scale:	NTS

Title:	
ø10'-0" x 40'-0" S/S POSITIVE PRESSURE PRODUCTION PACKAGE	
Customer:	MAGNUM
P.O.#	
LSD	GADSBY, ALBERTA
REV.	

Tornado Technologies Inc.

PH (403)883-2400  
FAX (403)883-2550  
TOLL FREE  
1-800-661-4128